

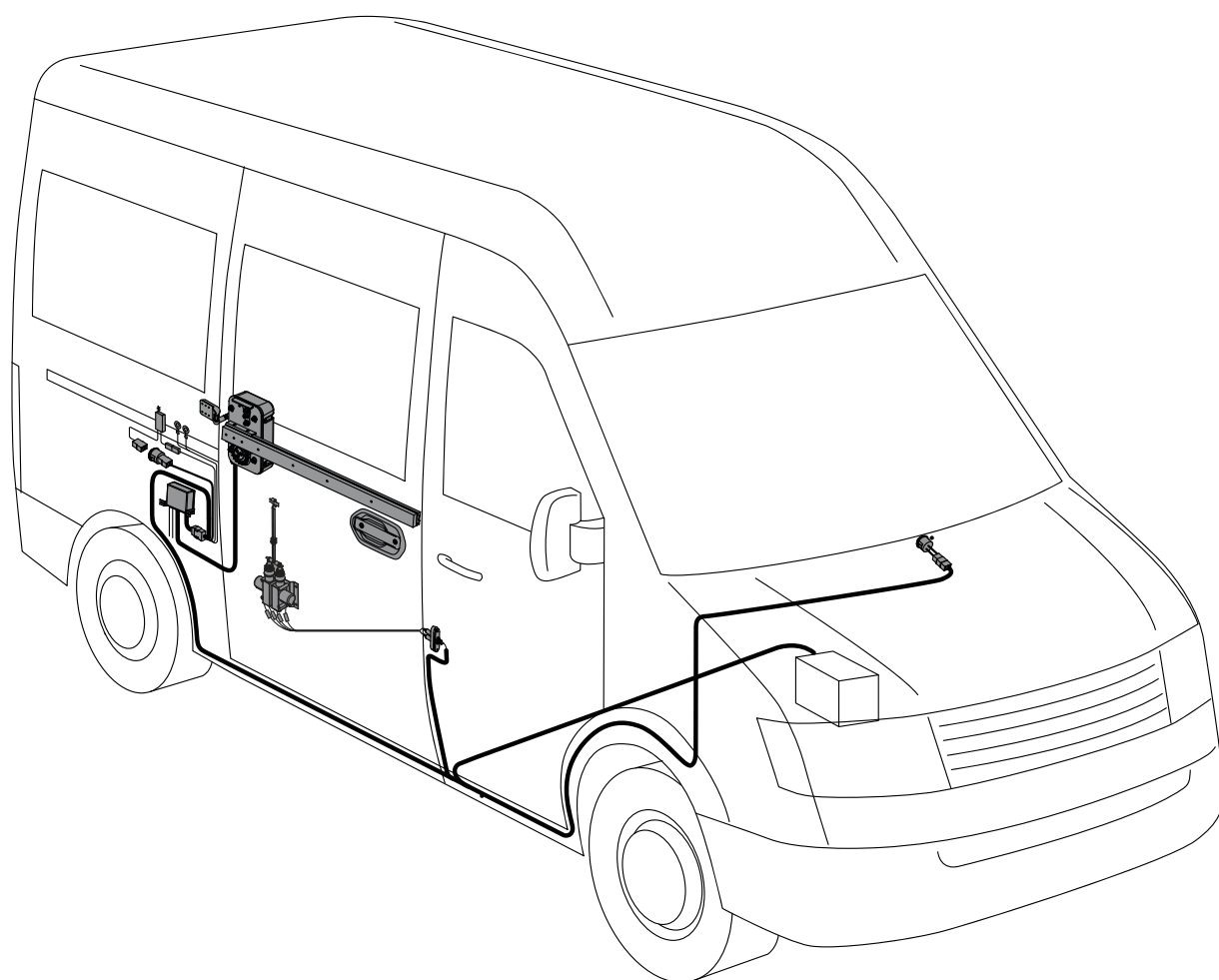
RACK AND PINION DRIVE

01.01.2026



SESAME

OPERATIONS MANUAL SESAME 304



FIAT DUCATO 240; 250

FORD TRANSIT 2006-2014

MERCEDES SPRINTER 906 / VOLKSWAGEN CRAFTER

MERCEDES SPRINTER 909 / VOLKSWAGEN LT

PEUGEOT BOXER / CITROEN JUMPER

RENAULT MASTER


TOYOTA HIACE

Symbols and means of visualisation

Warnings




Warning notices are used in these instructions to warn you of damage to property and personal injury.

- ▶ Always read and follow these warnings.
- ▶ Follow all measures labelled with the warning symbol and warning word.

Warning symbol	Warning word	Meaning
	WARNING	Hazards for persons. Non-observance can lead to serious injuries.

Other symbols and visualisation aids

Important information and technical instructions are specially emphasised to clarify correct operation.

Symbol	Meaning
	means 'Important information'. Information to prevent material damage, to understand or optimise work processes.
	means 'additional information'
	Symbol for an action: You have to do something here. ▶ Keep to the sequence for several action steps.

Product liability

In accordance with the manufacturer's liability for its products as defined in the Product Liability Act, the information contained in this brochure (product information and intended use, misuse, product performance, product maintenance, information and instruction obligations) must be observed. Failure to do so releases the manufacturer from his liability obligation.

Applicable documents

Type	Name
Operations Manual	Sesame 304

The plans are subject to change. Only use the latest version.

1.1 Intended use

The Sesame 304 rack-and-pinion drive is designed for the automatic opening and closing of sliding doors. The door operator is only suitable for use in panel vans. This door operator fulfils the requirements of UN/ECE R107, 7.6.5.

Any use other than the intended use, e.g. permanent manual operation, and all modifications to the product are not permitted. Observe the 'ADOR product information for drives'.

1.2 Safety instructions

- > Prescribed installation and maintenance work must be carried out by qualified personnel.
- > Assembly requires holes to be drilled in the body parts. The exact position of these drill holes is required in order to maintain the positional accuracy of the assembled components.
- > The country-specific laws and regulations must be observed for safety inspections must be observed.
- > Unauthorised modifications to the drive exclude any liability on the part of ADOR for resulting damage.
- > ADOR accepts no warranty for combinations with third-party products.
- > Only original ADOR parts may be used for repair and maintenance work.
- > In accordance with the Machinery Directive 2006/42/EC, a hazard analysis must be carried out before the door system is a risk analysis must be carried out and the door system labelled in accordance with the CE marking directive 93/68/EEC.
- > Observe the latest directives, standards and country-specific regulations, in particular:
 - > DIN VDE 0100-600: 'Installation of low-voltage systems; Part 6: Tests'
 - > DIN EN 60335-2-103, DIN 18263-4
 - > Accident prevention regulations, in particular BGV A1 'Principles and prevention' and BGV A3 DA 'Implementation instructions for the accident prevention regulation 'Electrical Installations and Equipment'



The product should be installed in such a way that easy access to the product for repairs possible repairs and/or maintenance with relatively little effort and that any and any removal costs are not disproportionate to the economic value of the product. disproportionate to the value of the product.

Congratulations on your purchase of this sliding door drive SESAME and hope that you are satisfied with its functions.

If you have any questions regarding maintenance or repair, please contact ADOR.

You are welcome to send us questions or suggestions by e-mail to info@ador-eu.de.

Careless use of this drive can be dangerous.

People, especially children, can be injured by the moving sliding door.



The responsibility for the safe operation of this automated sliding door lies with the driver of the vehicle.

The enclosed sticker must be affixed to the outside of the vehicle so that it is clearly legible, see page 4.

These operating instructions provide you with information on maintenance and problems such as malfunctions and breakdowns.

The sliding door may only be operated when the vehicle is stationary. when the vehicle is stationary.



Failure to do so is negligent and may result in personal injury. personal injury. Damage to the drive is possible.



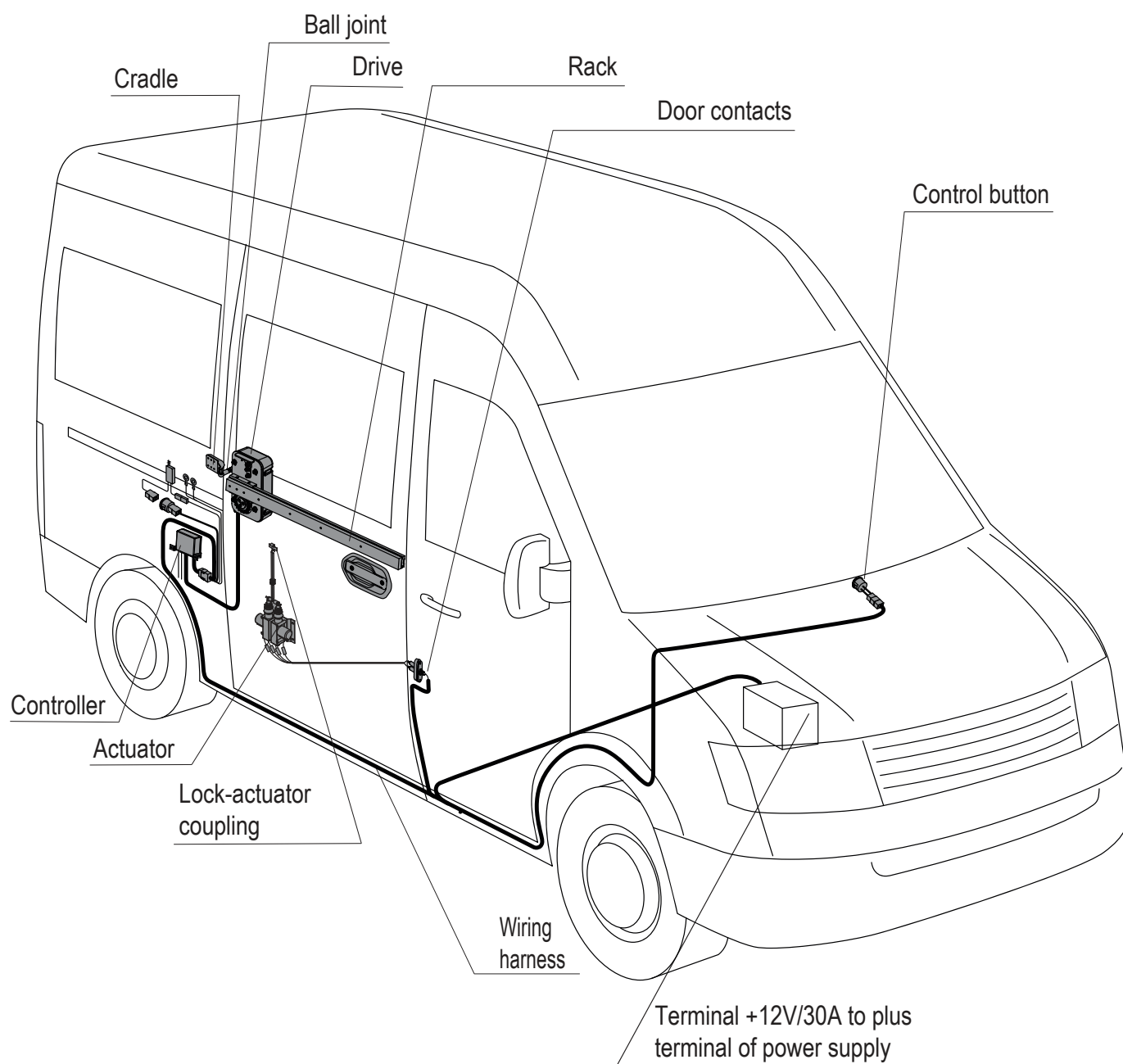
This door operator fulfils the requirements of UN/ECE R107, 7.6.5.

SESAME drive is designed for opening and closing doors in minibuses working as taxi buses or camper vans. You will find a list of models on the cover page.
If your model is not listed, please ask us.

Technical data	
Power consumption (rating)	70 W
Power consumption (max)	180 W
Door-opening time, (it depends upon the opening width adjustment)	~ 4 - 6 sec.
Door-closing time, (it depends upon the opening width adjustment)	~ 4 - 6 sec.
Category temperature range	-25°C to +40°C
Maximum slop for the door to be closed	7%
Resources	Not less then 100.000 cycles



The reliability and durability of this drive depends largely on the installation work



OPENING / CLOSING THE SLIDING DOOR

Press the control button briefly, ~ 0.5 sec. The sliding door starts moving immediately after the control button is released.

STOPPING THE OPENING MOVEMENT

To stop the sliding door during the opening movement, briefly press the control button. Pressing the control button again closes the sliding door.

STOPPING THE CLOSING MOVEMENT

To stop the sliding door during the closing movement, press the control button once briefly. The sliding door immediately moves immediately to the open position.

AUTOMATIC RETURN DURING THE CLOSING MOVEMENT

If there is a risk of collision with or entrapment of persons or objects, the sliding door stops and returns to the open position.

RESTORING THE FACTORY SETTING

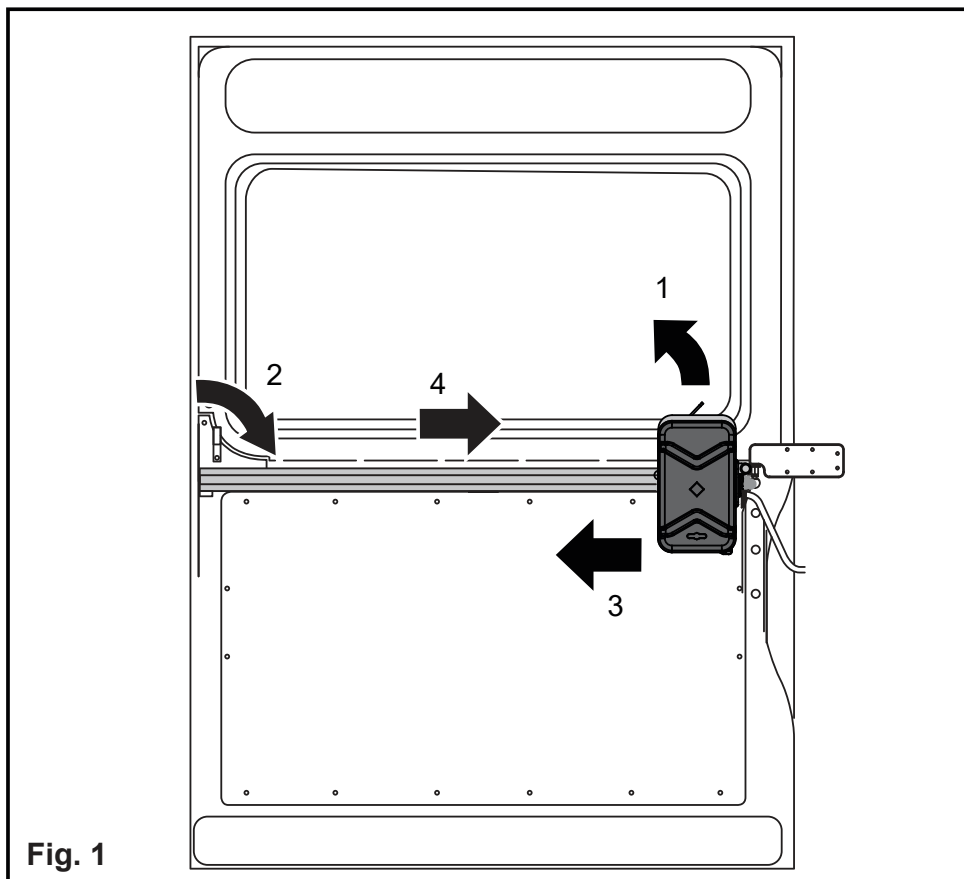
Press and hold the control button until the acoustic signal sounds four times, ~ 20 sec, then release the control button. The drive is in SESAME 304 mode.



The drive settings are reset to the factory settings in the event of a power failure.

Emergency door opening from the inside

1. Fold up the emergency opening handle.
2. Turn the door handle and hold it in place.
3. With your other hand, push the door drive to the left as far as it will go.
4. Open the sliding door by hand.



In order to enjoy this drive for a long time, regular maintenance is required.

This depends largely on the frequency of use.

These tasks are listed in the following table.

If you are unable to carry out this work, please contact a vehicle service company for advice.

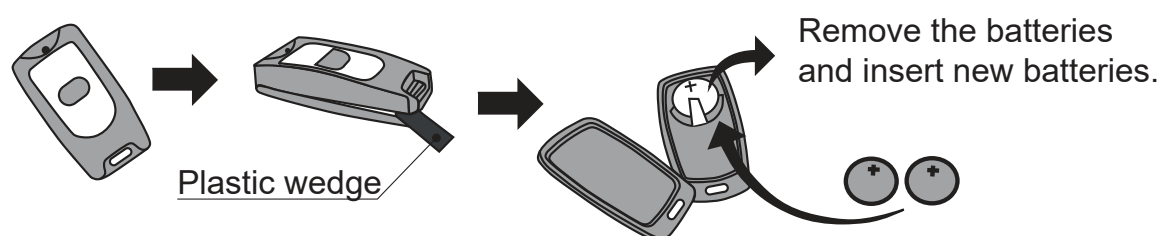
MAINTENANCE

No.	Operation	monthly	1/4 y.	1/2 y.	yearly
1	Visual inspection of drive and sliding door assemblies and parts	-	-	+	-
2	Wear inspection of sliding door contacts	-	-	+	-
3	Check the fastenings of the rack and retighten if necessary	-	-	-	+
4	Visual inspection of door gap	-	-	-	+
5	Checking the plug/socket connections of the main wiring harness	-	-	-	+
6	Adjust the ball joint if necessary	-	-	-	-
7	Check the fastenings of the cradle	-	-	-	+

Care instructions

No.	Type of work	Frequency
1	Clean and lubricate the rack (e.g. with WD 40)	weekly/ 1/4 yearly
2	Clean and grease door guides and carrige rollers	weekly/ 1/4 yearly
3	Clean and lubricate contacts groups	weekly/ 1/4 yearly
4	Check balljoint for wear and replace if nec.	1/2 yearly/ every 2 years

Battery replacement (optional)



Remove the bottom cover in the remote control.
Battery type: CR2016, 2 pieces

Please document or have documented any maintenance work carried out in the service certificate

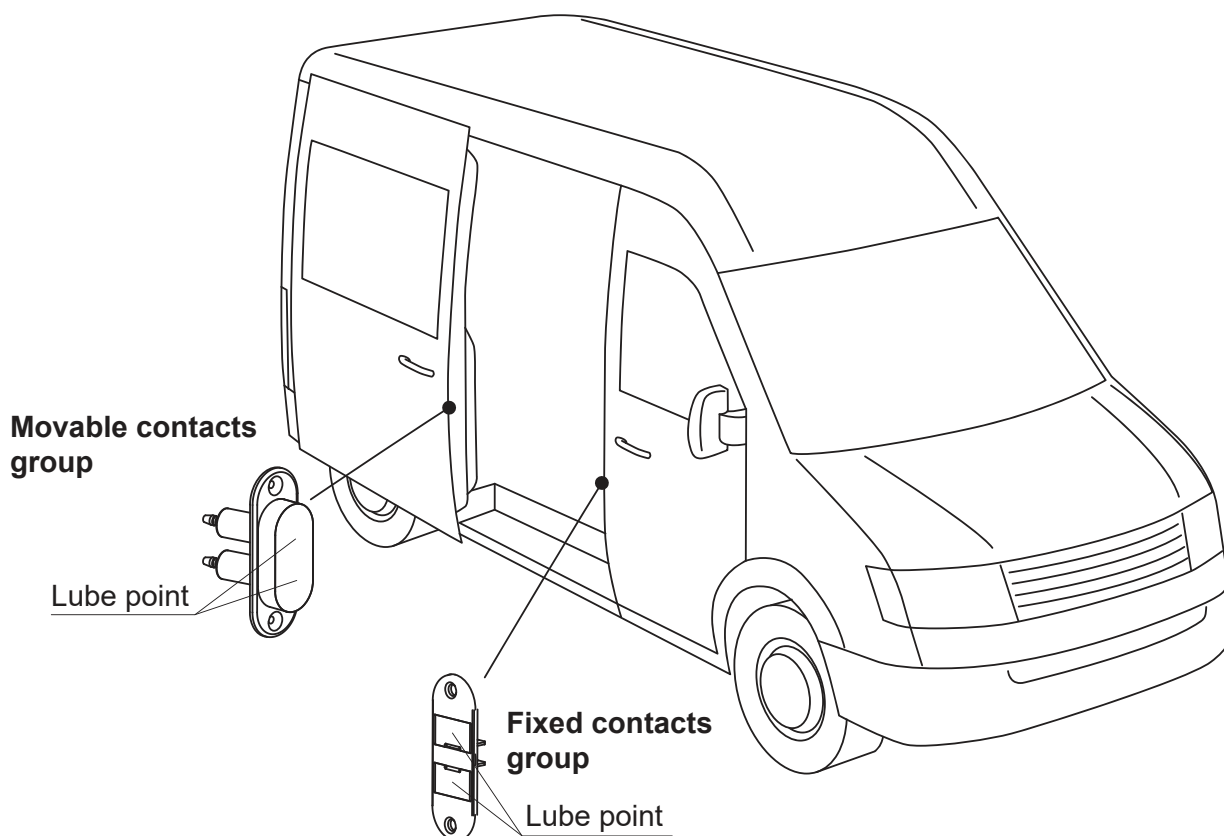


Carry out the first maintenance one month after initial installation



If the drive knocks, cracks, creaks or the sliding door shakes shake, contact your vehicle service center or us immediately. service or to us

Arrangement of the sliding door contacts groups



The Ador warranty for this drive is 12 months or 100,000 opening/closing cycles in the vehicle, e.g. minibus.

There are no warranty claims for the following components:

- Sliding door contacts
- Control button

Exclusion from the warranty:

- No professional installation of the drive
- Missing or incorrectly completed warranty certificate
- Damaged component labeling
- Maintenance certificates not available or deadline not met
- Damage caused by improper operation or maintenance
- Unauthorized connection of additional components that affect the drive functionality and any other electrical modification
- No professional repair or accidental damage

Details of the vehicle:

Manufacturer and type: _____

Body: _____

Vehicle identification number (VIN): _____

Assembly:

Date of installation: _____ (warranty start date for 12-month warranty)

The installation was carried out by (name, address or stamp):

The customer confirms that he has no claims for defects regarding the drive and its installation.

He is aware of the safety instructions and the warranty and confirms this.

Place, date, signature customer

[illegible]

Dear customers,

for warranty claims and service enquiries, please contact our representative in Germany.

Ador Europe
c/o BBT Sauer Engineering Office

Fellhornweg 24
D-89231 Neu-Ulm

+49 731 250 68 210
info@ador-eu.de
<https://ador-eu.de/>

The reprinting or other reproduction of documentation and accompanying documents of the products, even in part, is only in extracts, is only permitted with the express authorisation of the responsible ADOR country representative.

Subject to technical changes.